



Implementing Circular Economy Principles in Economic Activity Areas in Luxembourg

Dr. Paul Schosseler

Dr. Jeannot Schroeder, Douglas Mulhall

*Circular Economy Disruptions – Past,
Present and Future*

University of Exeter,

19/6/2018

TABLE OF CONTENTS

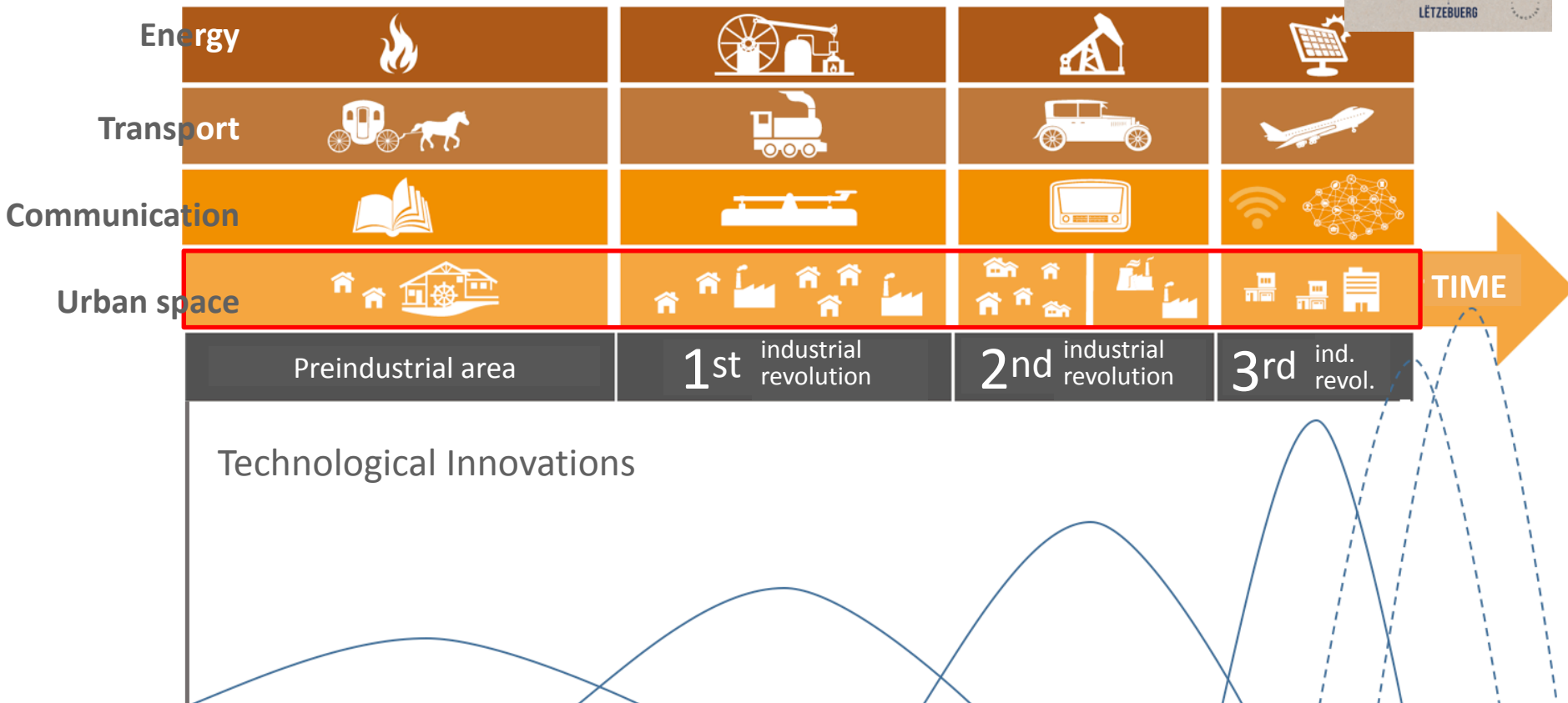
- The study and its authors
- Context – challenges
- Circular methodology
- Recommendations





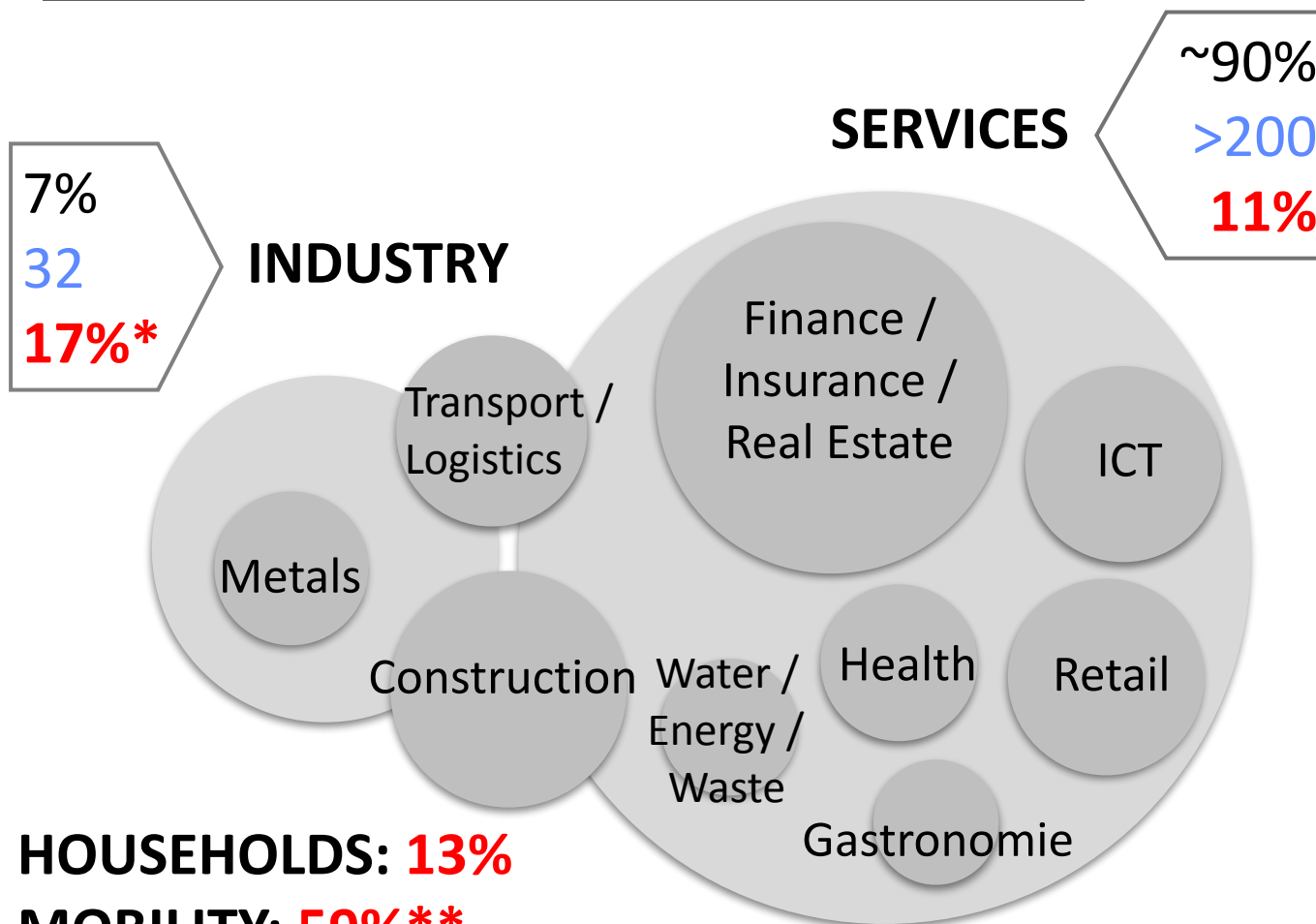


THIRD INDUSTRIAL REVOLUTION





THE LUXEMBOURG ECONOMY



HOUSEHOLDS: 13%

MOBILITY: 59%**

* Non ECTS

** Energy consumption for mobility (59%) contains contributions from professional transport and logistics (national / international).

MAIN CHARACTERISTICS PER SECTOR

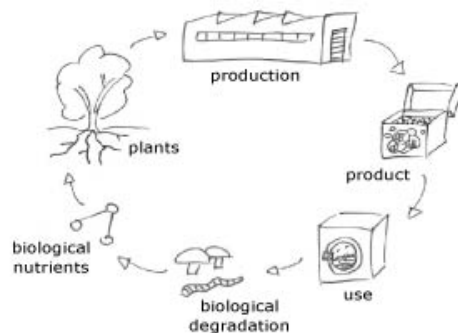
- Contribution to Gross Added Value: in total 42 Bn €/y
- Jobs (people x 1000)
- **Final energy consumption : 48'000 GWh/y**

(Source: STATEC)

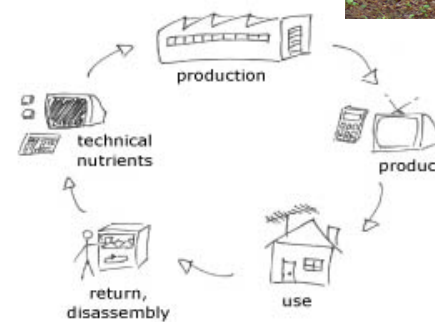


➤ A POSITIVE vision, based on 3 principles

- 100% renewable energies
- Waste = food
- Celebrate diversity



Biological cycle
= Consumption



Technological cycle
= Service



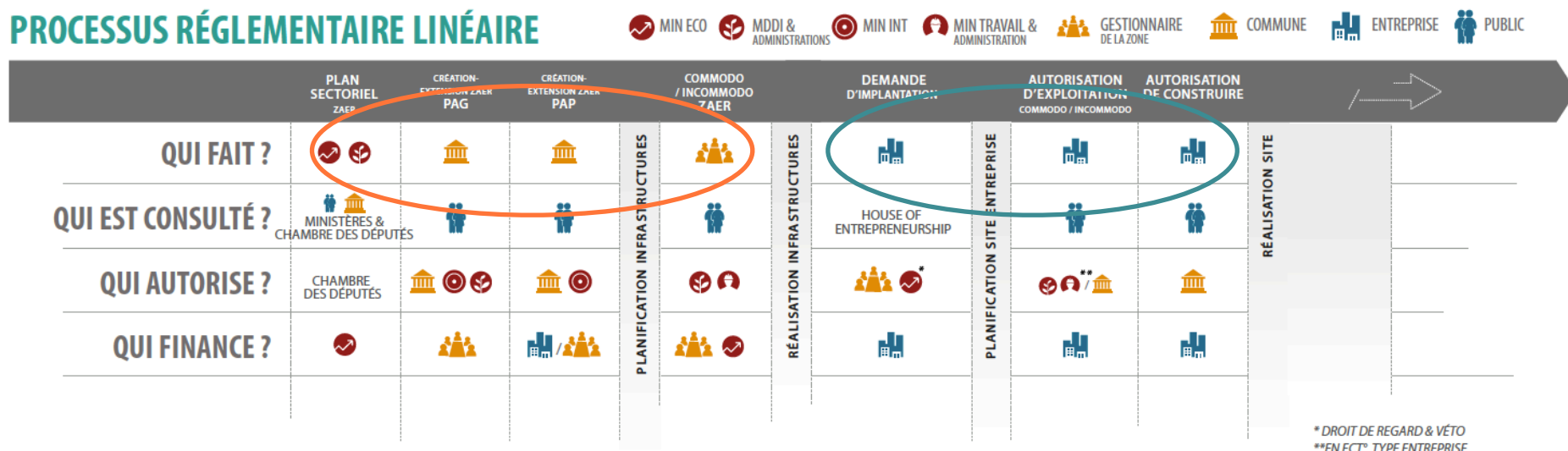
- Holistic approach, taking into account the **whole use cycle** of the Economic Activity Area



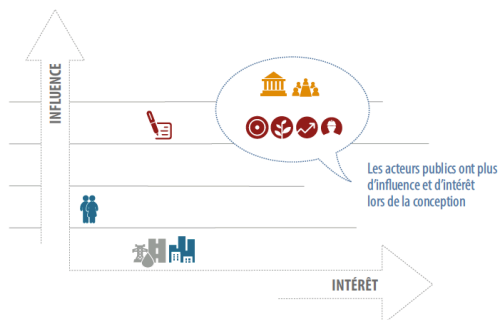


➤ A strongly segmented regulatory planning process

PROCESSUS RÉGLEMENTAIRE LINÉAIRE



CONCEPTION ACTEURS PRINCIPAUX IMPLIQUÉS DANS LE PROJET DE CONCEPTION D'UNE ZAE

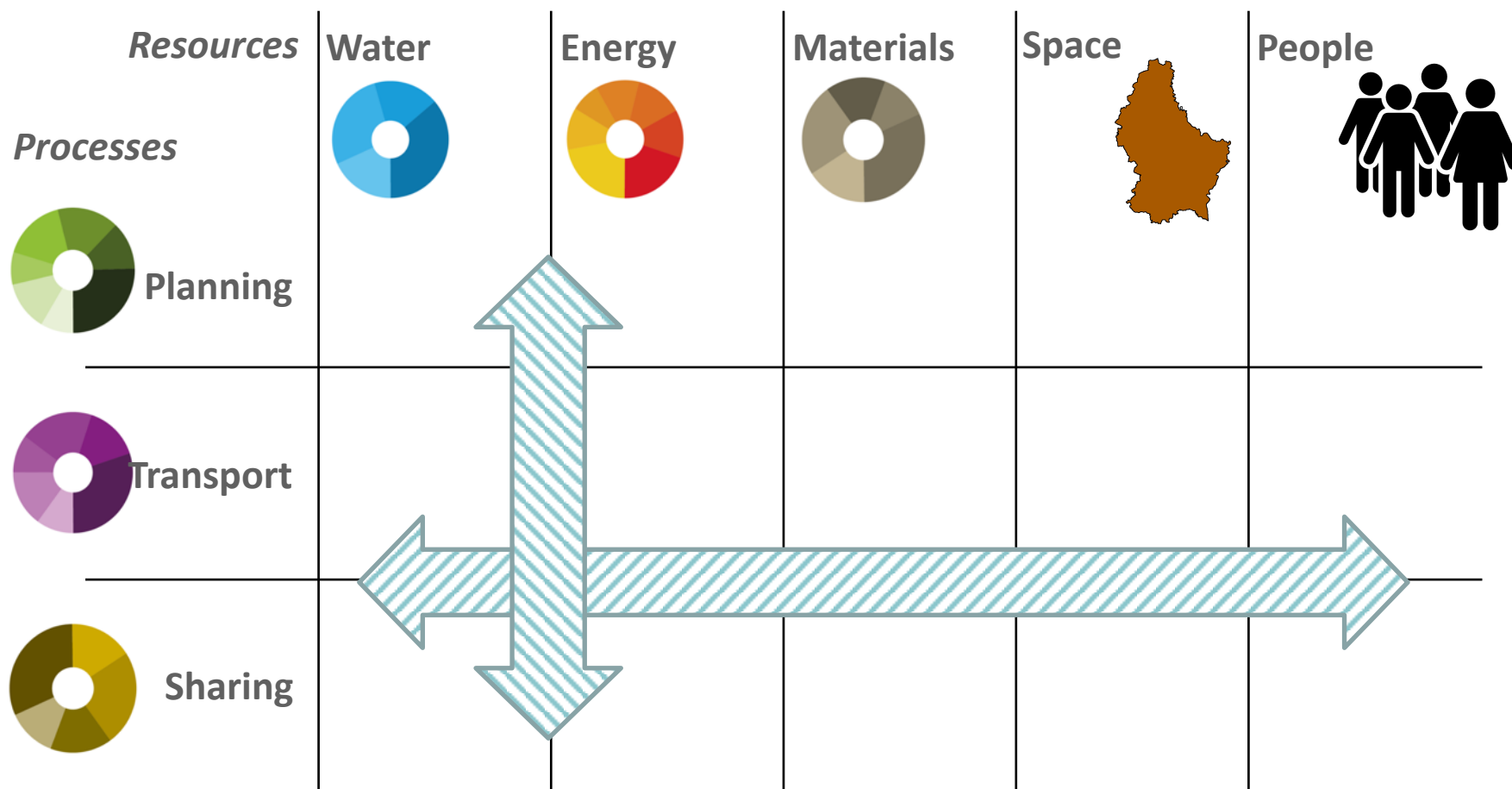


EXPLOITATION ACTEURS PRINCIPAUX INTÉRESSÉS PAR L'EXPLOITATION D'UNE ZAE



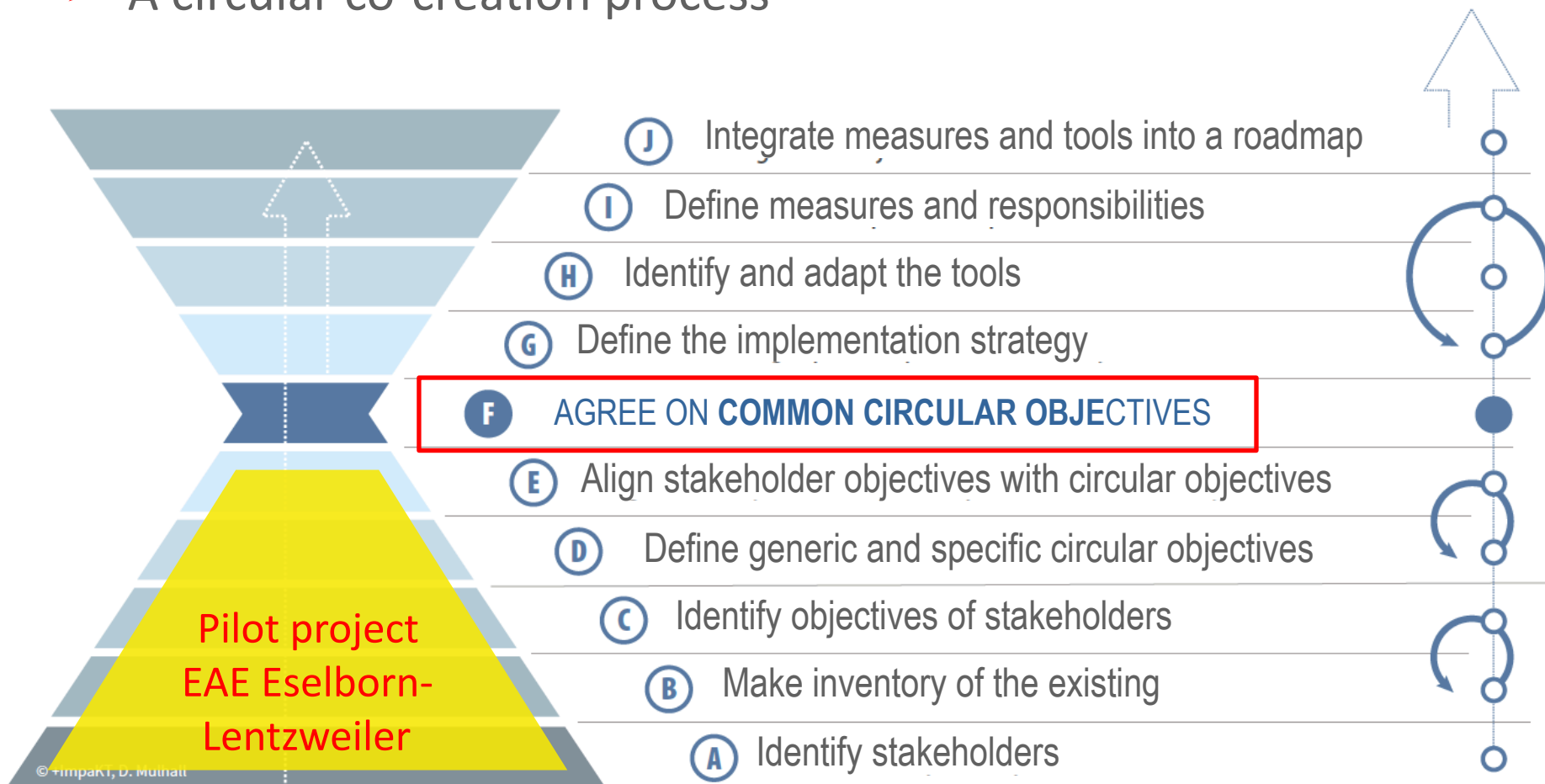


➤ TOOLBOX: Qualitative and quantitative objectives





➤ A circular co-creation process

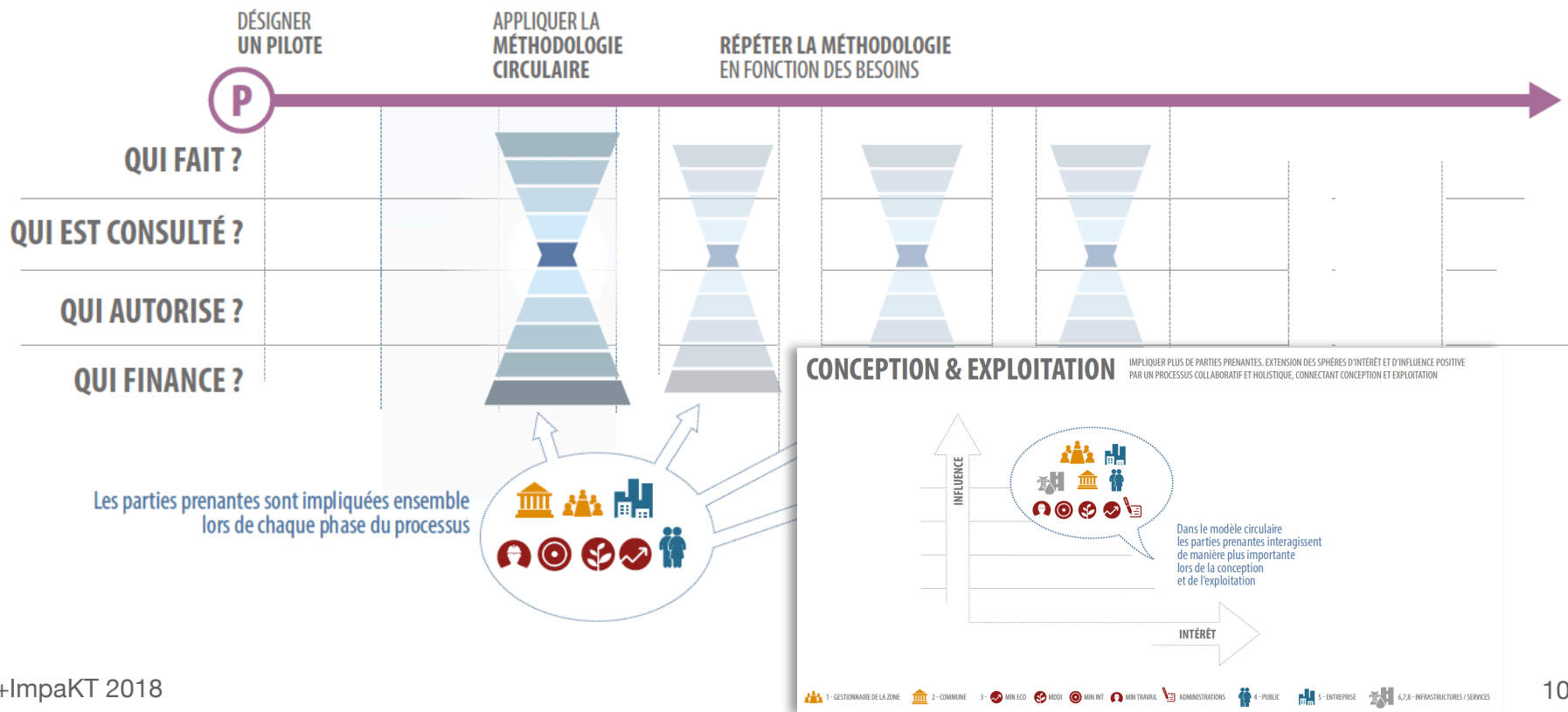




➤ Accelerate the linear process

- Designate a pilot
- Apply and repeat the circular co-creation process
- Collect quality information

MODIFICATION DU PROCESSUS LINÉAIRE





- Identify and empower a **pilot**: municipal syndicate SICLER
- **Integrate** in the (rural) **context**: biodiversity, water management
- **Densify**: Multi-storey, above ground parking, common chemicals and waste management
- **Share**: Renewable energies, equipment
- Improve **quality**: Services to employees and neighbours, mobility
- **Anticipate** reconstruction: adapt building regulations





Implementing Circular Economy Principles in Economic Activity Areas in Luxembourg

Thank you for your attention!

Download the report:
www.ecocirc-zae.lu



MAXIMISE POSITIVE IMPACT

+IMPAKT
11, RUE DE L'INDUSTRIE
L-8399 LUXEMBOURG
WWW.POSITIVEIMPAKT.EU